

# WITH OVER 60 EXPERIENCED IN-HOUSE TRADESPEOPLE,

**Christman Facility Solutions** turns problems into projects and projects into long-term solutions to serve the life cycle of facilities. Whether it's general contracting, mechanical/electrical/plumbing upgrades, DataCom or service requests, we live for the details. **High-quality craftsmanship is coded into our DNA.**



AIR CONDITIONING AND REFRIGERATION #TACLA 1454E  
 MASTER PLUMBER #M36197 | ELECTRICAL # 35067



	DRYWALL	CARPENTRY	ELECTRICAL	PLUMBING	MECHANICAL	
MEDICAL GAS INSULATION HVAC/PLUMBING DOORS & HARDWARE	<b>FACILITY PROJECTS</b> 		<b>GENERAL CONTRACTING</b> 		DATACOM ACOUSTICAL CEILING ACCESSORIES WALL PROTECTION	
	<b>SELF-PERFORMED SKILLED TRADES</b> 		<b>FACILITY SERVICES</b> 			
	WELDING   MILLWORK   FIRESTOPPING   LIFE SAFETY UPGRADES					

CFS specializes in providing tailored solutions that meet the unique challenges and demands of our higher education, public, data center and healthcare clients. We are committed to delivering excellence, innovation and reliability in every specialized service we offer, ensuring the success of our clients' endeavors.



www.christman**facilitysolutions.com** **in**  
**469-501-5535**

**ERIC TOLAR**  
 Executive Director  
 eric.tolar@christmanfs.com

**AARON AUTIN**  
 Project Executive  
 aaron.autin@christmanfs.com

**JODIE REESE**  
 MEP Director  
 jodie.reese@christmanfs.com

**STEVE SAGRAVES**  
 Service Manager  
 steve.sagraves@christmanfs.com

# MASTERS OF THE TRADE

**Christman Facility Solutions** excels in both historic restoration and carpentry, providing skilled artisans and top-notch equipment. Our master carpenters consistently deliver high-quality work that exceeds expectations, with expertise in rough carpentry and intricate installations.



AIR CONDITIONING AND REFRIGERATION #TACLA 1454E  
 MASTER PLUMBER #M36197 | ELECTRICAL # 35067



	DRYWALL	CARPENTRY	ELECTRICAL	PLUMBING	MECHANICAL	
DATA COM ACUSTICAL CEILINGS ACCESSORIES WALL PROTECTION	FACILITY PROJECTS 	GENERAL CONTRACTING 				
	SELF-PERFORMED SKILLED TRADES 	FACILITY SERVICES 				
	DOORS & HARDWARE HVAC/PLUMBING INSULATION MEDICAL GAS					
						LIFE SAFETY UPGRADES FIRESTOPPING MILLWORK WELDING



CFS specializes in providing tailored solutions that meet the unique challenges and demands of our higher education, public, data center and healthcare clients. We are committed to delivering excellence, innovation and reliability in every specialized service we offer, ensuring the success of our clients' endeavors.

## GENERAL TRADES

- In Wall Blocking
- Roof Nailers
- Temporary Protection & Enclosures
- Doors, Frames & Hardware
- Lockers
- Wall Protection & Corner Guards
- Acoustical Panels
- Stadium Seating
- Signage
- Fire Protection Specialties

## FINISH CARPENTRY

- Custom Millwork & Cabinetry
- Architectural Woodwork
- Trim & Molding Installation
- Door & Window Installation
- Specialty Ceilings & Walls



### ERIC TOLAR

Executive Director  
 eric.tolar@christmanfs.com

### STEVE SAGRAVES

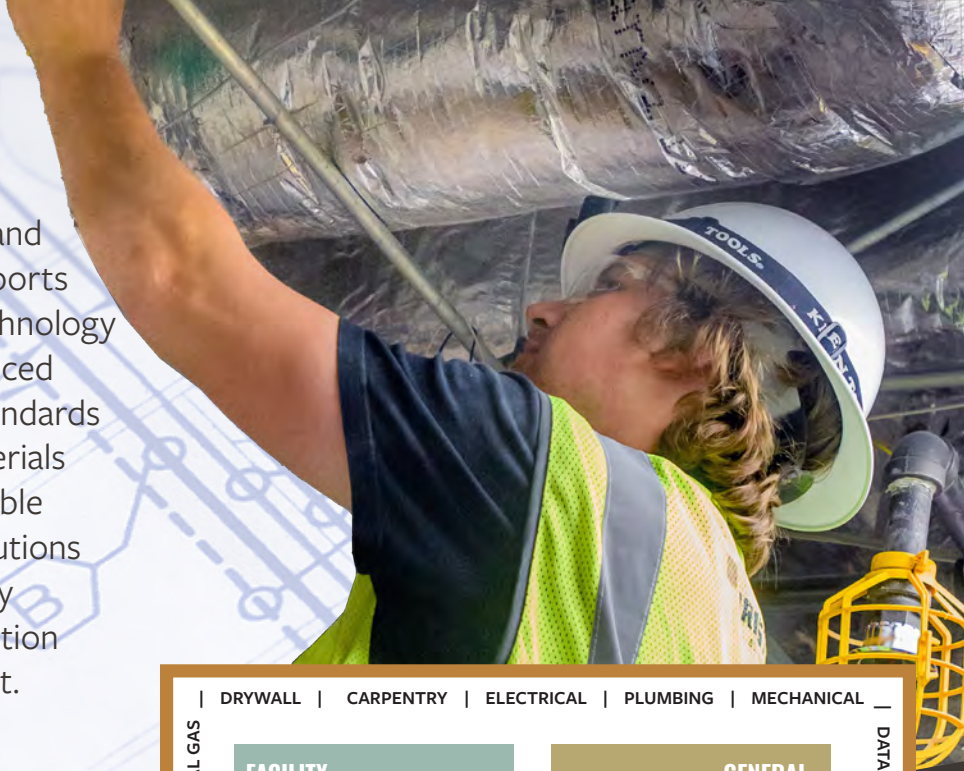
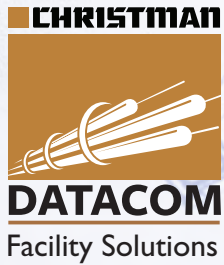
Service Manager  
 steve.sagraves@christmanfs.com

www.christman**facilitysolutions.com**

469-501-5535

# TAILORED SOLUTIONS

**Christman Facility Solutions** for robust and efficient data com infrastructure that supports your information and communications technology needs. Our skilled technicians are experienced and up-to-date with the latest industry standards and technologies. We use top-quality materials and rigorous installation practices for reliable and long-lasting systems. CFS' tailored solutions ensure optimal performance and scalability and our commitment to customer satisfaction includes ongoing maintenance and support.



CFS specializes in providing tailored solutions that meet the unique challenges and demands of our higher education, public, data center and healthcare clients. We are committed to delivering excellence, innovation and reliability in every specialized service we offer, ensuring the success of our clients' endeavors.

	DRYWALL	CARPENTRY	ELECTRICAL	PLUMBING	MECHANICAL	
DRYWALL   MEDICAL GAS INSULATION   HVAC/PLUMBING DOORS & HARDWARE	<b>FACILITY PROJECTS</b> 		<b>GENERAL CONTRACTING</b> 		DATACOM   ACoustical CEILINGs ACCESSORIES   WALL PROTECTION	
	<b>SELF-PERFORMED SKILLED TRADES</b> 		<b>FACILITY SERVICES</b> 			
	WELDING   MILLWORK		FIRESTOPPING   LIFE SAFETY UPGRADES			

## OUR EXPERTISE

- Structured Cabling
- Network Setup
- Audio-Visual Solutions
- Fiber Optic Cabling
- Infrastructure for Information Communication Technology
- Video Surveillance
- Access Control
- Nurse Call / Code Blue Systems
- Distributed Antenna Systems



www.christman**facilitysolutions.com**

**469-501-5535**

**ERIC TOLAR**

Executive Director  
eric.tolar@christmanfs.com

**JODIE REESE**

MEP Director  
jodie.reese@christmanfs.com

# SOLUTIONS FOCUSED TEAM

Christman Facility Solutions troubleshoots challenges on the spot and partners with you to identify your needs and recommend timely solutions. We employ multiple master and journeymen electrical license holders.



ELECTRICAL # 35067

	DRYWALL	CARPENTRY	ELECTRICAL	PLUMBING	MECHANICAL	
DATA COM   ACUSTICAL CEILING   ACCESSORIES   WALL PROTECTION	FACILITY PROJECTS 			GENERAL CONTRACTING 		
	SELF-PERFORMED SKILLED TRADES 	CHRISTMAN FACILITY SOLUTIONS		FACILITY SERVICES 		
	DOORS & HARDWARE   HVAC/PLUMBING   INSULATION   MEDICAL GAS					
		LIFE SAFETY UPGRADES   FIRESTOPPING   MILLWORK   WELDING				



**Preventative Maintenance & Repairs**  
 Troubleshooting & Repair  
 Surge Protection

**Subcontractor Services**  
 Renovations  
 Build Outs  
 Low Voltage  
 Phone & Data  
 New Circuits  
 Exterior & Interior Lighting

**Electrical Upgrades**  
 Equipment Replacement  
 Panel Upgrades  
 Panel Schedule / Circuit  
 Directory Services  
 Lighting Upgrades  
 LED Upgrades



CFS specializes in providing tailored solutions that meet the unique challenges and demands of our higher education, public, data center and healthcare clients. We are committed to delivering excellence, innovation and reliability in every specialized service we offer, ensuring the success of our clients' endeavors.

**ERIC TOLAR**

Executive Director  
 eric.tolar@christmanfs.com

**JODIE REESE**

MEP Director  
 jodie.reese@christmanfs.com

www.christman**facilitysolutions.com** in

**469-501-5535**

# PROVEN PARTNER

**Christman Facility Solutions'** track record in competitive hard-bid markets underscores our strong relationships with subcontractors and suppliers and our expertise in navigating market dynamics. It also underscores our enduring relationships with local trades, allowing us to consistently secure the highest quality work at the most competitive prices available. Our ability to self-perform the trades which we offer enhances project scheduling, cost efficiency and overall quality, while maintaining the integrity and confidentiality of the bidding process.

AIR CONDITIONING AND REFRIGERATION #TACLA 1454E  
 MASTER PLUMBER #M36197 | ELECTRICAL # 35067



CFS specializes in providing tailored solutions that meet the unique challenges and demands of our higher education, public, data center and healthcare clients. We are committed to delivering excellence, innovation and reliability in every specialized service we offer, ensuring the success of our clients' endeavors.

	DRYWALL   CARPENTRY   ELECTRICAL   PLUMBING   MECHANICAL		
DOORS & HARDWARE   HVAC/PLUMBING   INSULATION   MEDICAL GAS	<p><b>FACILITY PROJECTS</b></p>	<p><b>GENERAL CONTRACTING</b></p>	
	<p><b>SELF-PERFORMED SKILLED TRADES</b></p>		<p><b>FACILITY SERVICES</b></p>
	DATA COM   ACUSTICAL CEILINGS   ACCESSORIES   WALL PROTECTION		
	LIFE SAFETY UPGRADES   FIRESTOPPING   MILLWORK   WELDING		

Cost Monitoring & Control  
 Master Schedule Development & Control  
 Management Of Trade Contractors  
 Quality Assurance & Control

Strict Safety Management  
 Shop Drawing (Submittal) Review  
 Proactive Change Management  
 Responsive Field Management



**ERIC TOLAR**  
 Executive Director  
 eric.tolar@christmanfs.com

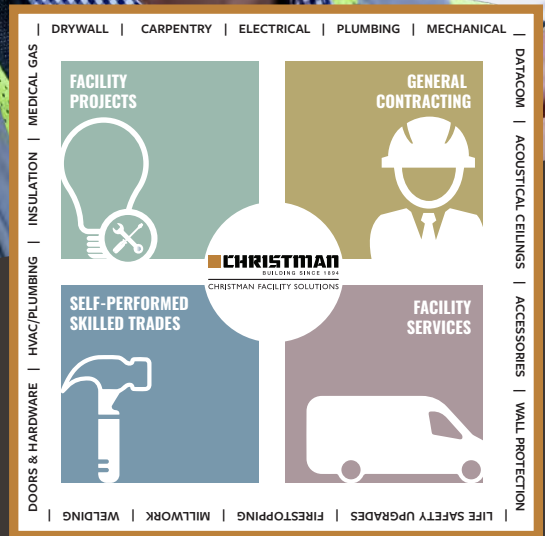
**AARON AUTIN**  
 Project Executive  
 aaron.autin@christmanfs.com

# OPTIMAL SOLUTIONS

Christman Facility Solutions installs, services and repairs your plumbing and mechanical systems, helping to ensure their peak performance. Collaborating with equipment and service providers in the industry, our team strives to deliver optimal solutions tailored to your requirements. Our primary objective is to maintain the uninterrupted functionality of your facility, while reducing your long-term equipment operating costs.



AIR CONDITIONING AND REFRIGERATION #TACLA 1454E  
 MASTER PLUMBER #M36197 | ELECTRICAL # 35067



CFS specializes in providing tailored solutions that meet the unique challenges and demands of our higher education, public, data center and healthcare clients. We are committed to delivering excellence, innovation and reliability in every specialized service we offer, ensuring the success of our clients' endeavors.

## HVAC SERVICES

- Variable Refrigerant Flow
- Direct Expansion
- Variable Air Volume
- Fan Power Boxes
- Fan Coil Units
- Cooling Tower Service
- Pumps
- Heating/Chilled Water Boilers
- Air Handlers & Roof Top Units
- Exhaust Fans/Systems
- DDC Controls
- Insulation
- 24-Hour Service

## PLUMBING SERVICES

- Pipe Installation & Repair
- Fixture Installation & Repair
- Sanitary Storm
- Domestic Water
- Medigas Systems
- Water Treatment Systems
- Reverse Osmosis
- Deionization Systems
- 24-Hour Service



### ERIC TOLAR

Executive Director  
 eric.tolar@christmanfs.com

### JODIE REESE

MEP Director  
 jodie.reese@christmanfs.com

www.christman**facilitysolutions.com** in

469-501-5535

# BUILDING TRUST

**Christman Facility Solutions** isn't just constructing buildings; we're building trust and long-term relationships. Our experienced and trusted on-call service team can assist with your company's ongoing facility needs. Our mission is clear: to breathe new life into your properties. We specialize in the art of repair, refreshment, and renewal, transforming tired and worn spaces into vibrant and inviting places that leave lasting impressions.

AIR CONDITIONING AND REFRIGERATION #TACLA1454E  
 MASTER PLUMBER #M36197 | ELECTRICAL # 35067



	DRYWALL	CARPENTRY	ELECTRICAL	PLUMBING	MECHANICAL	
DOORS & HARDWARE   HVAC/PLUMBING   INSULATION   MEDICAL GAS	<b>FACILITY PROJECTS</b>		<b>GENERAL CONTRACTING</b>		DATACOM   ACOUSTICAL CEILINGS   ACCESSORIES   WALL PROTECTION	
	<b>SELF-PERFORMED SKILLED TRADES</b>		<b>FACILITY SERVICES</b>			
	BUILDING SINCE 1934 CHRISTMAN FACILITY SOLUTIONS					
	LIFE SAFETY UPGRADES   FIRESTOPPING   MILLWORK   WELDING					



## AREAS OF EXPERTISE

### Repairs

- Electrical
- Mechanical
- Plumbing
- Rough & Finish Carpentry
- Historic Millwork Repair
- Restoration & Repairs
- Doors & Hardware
- Restroom Partitions & Accessories
- Wardrobes & Closets
- Fixed Audience Seating

### Site Furnishings

- Windows
- Cabinets
- Countertops
- Trim & Architectural Woodwork
- Storage Shelving
- Wall & Corner Guards
- Visual Display Boards
- Signage Installation
- Lockers
- Welding

CFS specializes in providing tailored solutions that meet the unique challenges and demands of our higher education, public, data center and healthcare clients. We are committed to delivering excellence, innovation and reliability in every specialized service we offer, ensuring the success of our clients' endeavors.

### ERIC TOLAR

Executive Director  
 eric.tolar@christmanfs.com

### STEVE SAGRAVES

Service Manager  
 steve.sagraves@christmanfs.com

